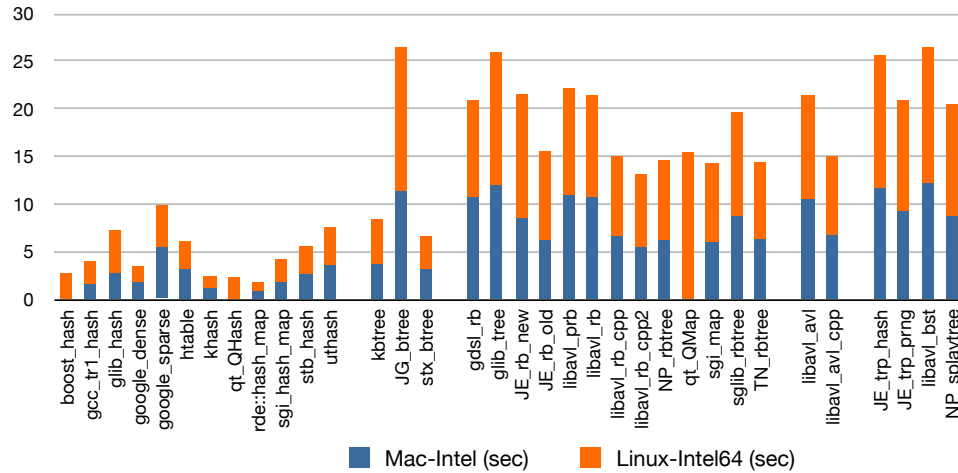
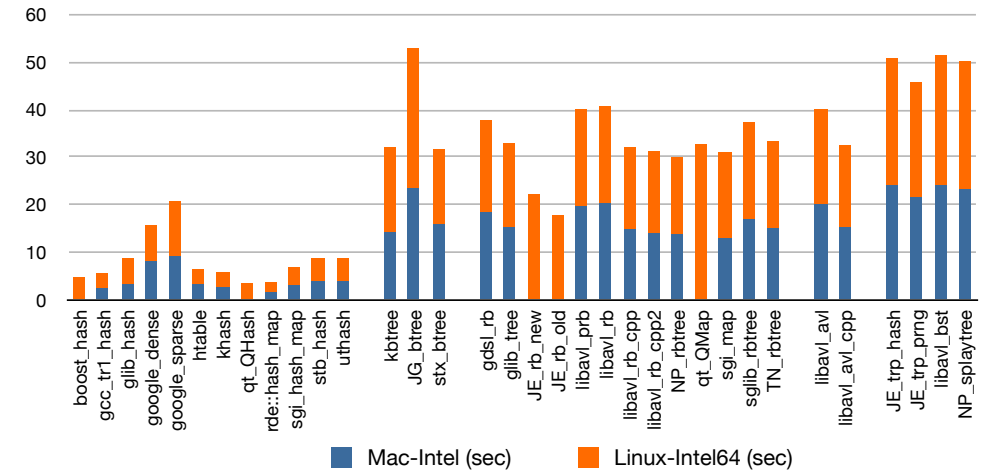


Program	Version	Intel32-Mac Int-key CPU (sec)	Intel32-Mac Int-key Mem (MB)	Intel32-Mac Str-key CPU (sec)	Intel32-Mac Str-key Mem (MB)	Intel64-Linux Int-key CPU (sec)	Intel64-Linux Int-key Mem (MB)	Intel64-Linux Str-key CPU (sec)	Intel64-Linux Str-key Mem (MB)	Comments
boost_hash	1.36					2.79	25.79	4.76	25.79	C++, hash
gcc_tr1_hash	g++-4	1.65	14.47	2.31	40.00	2.36	28.66	3.18	80.00	C++, TR1, hash (fake mem)
glib_hash	2.17	2.76	20.84	3.17	20.84	4.48	43.92	5.53	43.92	C void*, hash
google_dense	1.2	1.84	32.80	8.16	32.80	1.59	32.99	7.46	65.76	C++, hash
google_sparse	1.2	5.44	7.88	9.16	7.69	4.42	8.54	11.56	15.02	C++, hash
htable	20090114	3.16	46.22	3.22	46.22	2.94	81.74	3.27	81.74	C, hash
khash	0.2.3	1.14	12.94	2.53	12.94	1.35	12.52	3.18	18.66	C macro, hash
qt_QHash	4.4.3					2.36	28.75	3.54	37.61	C++, hash
rde::hash_map	20081009	0.92	36.89	1.54	36.89	0.91	49.36	2.16	73.94	C++, hash
sgi_hash_map	g++-4	1.79	13.04	2.94	13.04	2.47	25.78	3.85	25.78	C++, SGI, hash
stb_hash	2.16	2.68	16.42	3.90	16.42	2.86	16.61	4.86	33.00	C macro, hash
uthash	1.4	3.59	35.97	3.87	35.97	3.96	56.61	4.86	57.17	C macro, hash
kbtree	080927	3.74	8.20	14.21	8.21	4.70	8.49	17.83	16.69	C macro, B-tree
JG_btrees	1.0	11.41	18.41	23.37	18.42	15.09	40.86	29.60	40.83	C void*, B-tree
stx_btrees	0.8.3	3.14	8.57	15.90	8.58	3.52	9.12	15.66	14.67	C++, B+-tree
gdsI_rb	1.4	10.76	29.82	18.36	29.82	10.10	48.98	19.41	48.98	C void*, rb
glib_tree	2.17	12.04	24.84	15.17	24.84	13.89	54.44	17.71	54.44	C void*, rb
JE_rb_new	080514	8.49	9.93			13.03	19.63	22.13	29.41	C macro, llrb
JE_rb_old	080514	6.20	19.87			9.39	29.42	17.79	39.19	C macro, rb
libavl_prb	2.0.2	10.97	29.80	19.60	29.80	11.14	48.41	20.39	48.41	C void*, rb
libavl_rb	2.0.2	10.77	19.87	20.23	19.87	10.70	48.41	20.45	48.41	C void*, rb
libavl_rb_cpp	2.0.2	6.66	19.87	14.79	19.87	8.36	29.41	17.40	29.41	C++, rb
libavl_rb_cpp2	2.0.2	5.53	9.94	14.00	9.94	7.59	19.63	17.14	29.41	C++, rb
NP_rbtrees	1.7	6.24	19.87	13.76	19.87	8.36	29.41	16.15	39.19	C macro, rb
qt_QMap	4.4.3					15.47	21.00	32.73	29.68	C++, skiplist
sgi_map	g++-4	5.99	19.87	12.88	19.87	8.34	29.42	18.11	39.20	C++, STL, rb
sglib_rbtrees	1.0.3	8.79	19.87	16.95	19.87	10.85	29.42	20.36	29.42	C macro, rb-recur
TN_rbtrees	080928	6.37	19.87	14.90	19.87	8.00	29.41	18.33	39.19	C++, rb
libavl_avl	2.0.2	10.51	19.87	20.01	19.87	10.89	48.41	20.10	48.41	C void*, avl
libavl_avl_cpp	2.0.2	6.73	19.87	15.11	19.87	8.30	29.41	17.43	29.41	C++, avl
JE_trp_hash	080514	11.70	9.93	24.14	9.93	13.91	19.64	26.51	29.41	C macro, treap
JE_trp_prng	080514	9.30	19.87	21.62	19.87	11.62	29.41	24.10	29.41	C macro, treap
libavl_bst	2.0.2	12.17	19.87	24.14	19.87	14.34	38.63	27.29	38.63	C void*, bst
NP_splaytree	1.7	8.79	9.93	23.28	9.93	11.68	19.63	26.81	29.41	C macro, splay

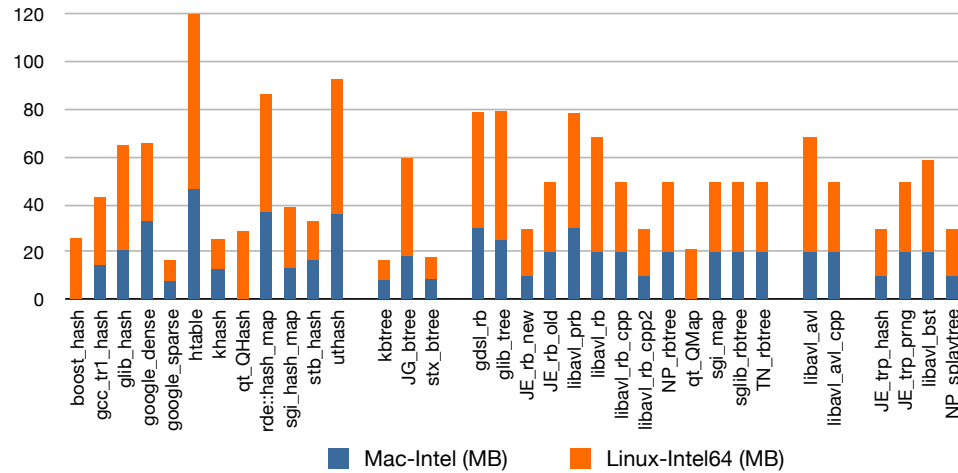
CPU time (sec): unsigned keys, int values



CPU time (sec): char* keys, int values



Memory (MB): unsigned keys, int values



Memory (MB): char* keys, int values

